

CBVAC



CBVAC

Beijing Factory
ADD: No. 9, Cuibai Road, Cui Cun town, Changping
District, Beijing 102212, China
Sichuan Factory
ADD: Duofu Industrial Park, Economic Development
Zone, Nanchong City, Sichuan Province, China
Tel: 010-62760021 010-62760038 400-111-9998
Email: cbvac@cbvac.com Fax: 010-62768205
Website: www.cbvac.com



九天真空公众号



真空超市

FLANGE FITTINGS AND BELLOWS



CONTENTS

COMPANY INTRODUCTION	I
PERFORMANCE OF HONOR	II
PRODUCT CLASSIFICATION	01
APPLICATION FIELDS	02
I Flanges And Fitttings	03
KF series	05
CF series	11
LF series	17
J Connector	23
CX2 Gas seal Plug	23
K Bellows	25
Hydraulic-formed bellows	25
Welding bellows	26
Flexible metal hose	27
S system integration	32

COMPANY INTRODUCTION

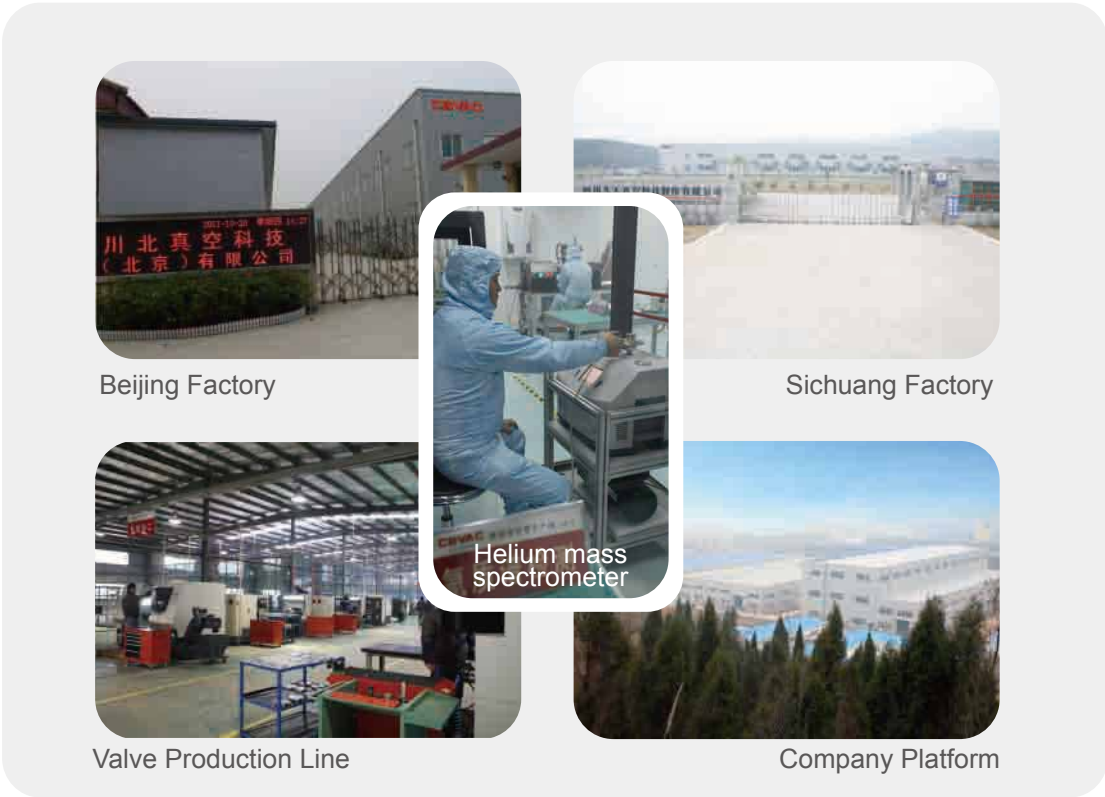
The brand of CBVAC was founded in 2002.

Our industry belongs to vacuum fields, we are a comprehensive high-tech enterprise specialized in vacuum products development, design, production, sales and service. We have succeeded in developing the first dry scroll vacuum pump in China, the first DN3000 oppositely pressure-resistant high-speed vacuum gate valves in China, and the first 7 sheets engineered MOCVD vapor deposition equipment in China under the cooperative development with Chinese Academy of Sciences. The fully reflects the company's independent innovation ability. CBVAC will adhere to the advanced management concept, the high quality of the products, to realize fast development as a leading brand excellent and advanced enterprise in both international and domestic vacuum industry.

CBVAC Beijing company Chuanbei vacuum technology(Beijing) co.,LTD is located in Changping district of Zhong - guangcun national independent innovation demonstration garden,covers the area more than 10000 square meters, CBVAC Sichuan company Sichuan JiuTian Vaccum Technology Corporation Limited is located in Duofu industry park in Nanchong city, covers the area more than 60000 square meters. At present, CBVAC brand has four leading main product categories including vacuum valves, vacuum pumps, vacuum flanges & vacuum bellows, vacuum integrated equipments. The vacuum products and technologies are widely applied in new energy, new materials, national defense, aerospace, semiconductor, manufacturers for vacuum equipment, universities, scientific research institutions and other strategic emerging industries.

Our company owned an excellent R&D team consists of professor of engineering ,senior engineers and engineers, from which 3 people are the commissioners from China vacuum technology standardization technology committee and China machinery industry laboratory instruments and equipment standardization technical committee(CMIF/TC16),participated the making of a number of national standards and industry standards.2 people enjoy the State Council's allowance, other main technical personnel also own rich experiences in vacuum valves& vacuum equipments technologies, also engaged in design work with dozens of years in the vacuum fields. With the sustainable technical innovation for many years, we constantly launch the new products and new structures, also acquired dozens of national utility model patent certificates and one national invention patent.

CBVAC will continue to adhere to the sincere, innovative, pragmatic and efficient. Constantly offering high quality products and first-class service to our clients, contribute to the construction of beautiful China.



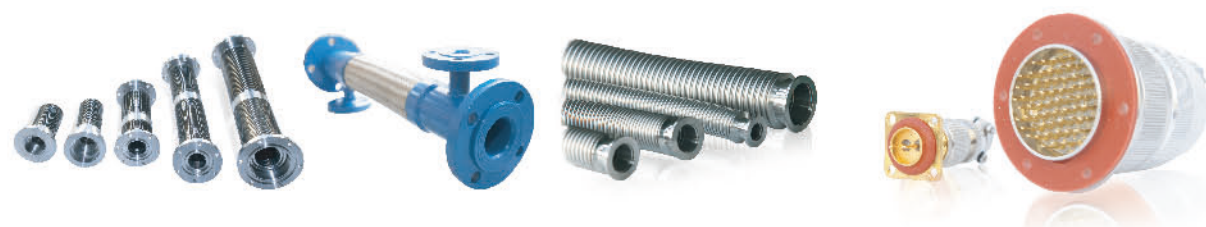
荣誉资质

PERFORMANCE OF HONOR



PRODUCT CLASSIFICATION

Flanges and Fittings



Bellows

Connector

APPLICATION FIELD

IT industry, semiconductor industry, aviation and aerospace, environmental simulation, LED industry, photovoltaic industry, medicine and biological engineering, vacuum coating, testing, metallurgy, welding, heat treatment, scientific instruments development, new energy, new materials, environmental protection, chemical industry, etc

Pipe connection



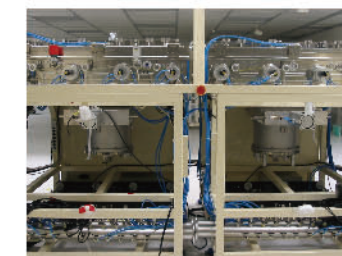
Damping connection



Vacuum Furnace



semiconductor industry



LED industry



Vacuum Equipment

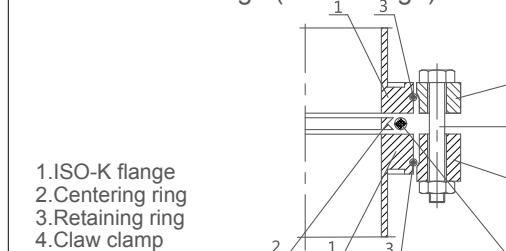




3.ISO-K Flange Connection

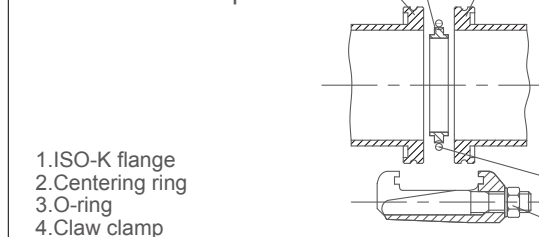
a.Use two rotatable flange (collar flange): use bolts to connect the flange via collar flange, use centering ring and o-ring to seal it, check the sketch.

Two rotatable flange (collar flange) connection



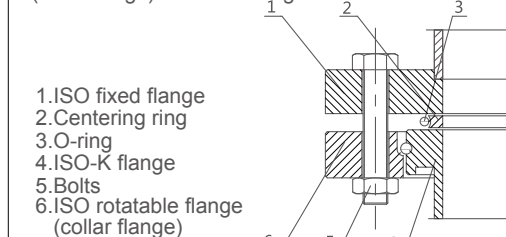
b.Use double claw clamp: use double claw clamp to connect the flange, use centering ring and o-ring to seal it, check the sketch.

Double claw clamp connection



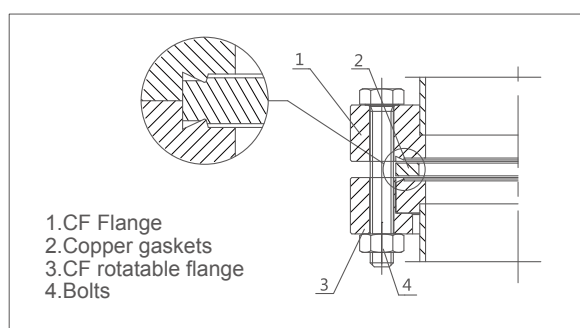
c.Use bolts to connect the rotatable flange (collar flange) with fixed flange: collar flange and fixed flange match each other, use centering ring and o-ring to seal it, check the sketch.

Bolts to connect the rotatable flange (collar flange) with fixed flange



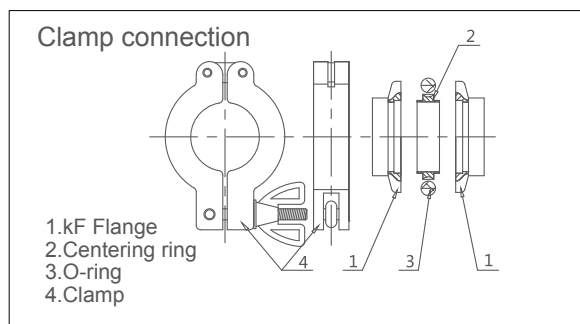
1.CF Flange Connection

Use bolts to connect the flanges, and oxygen-free copper gaskets to seal it, check the sketch.

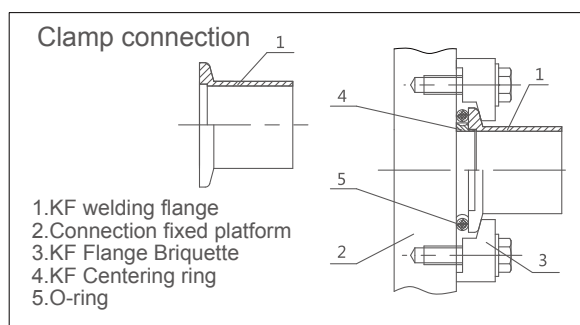


2.KF Flange Connection

a.Clamp connection: use clamp to connect the flange, use centering ring and o-ring to seal it, check the sketch.



b.Bolts connection: use KF Flange Briquette to connect the flange, use centering ring and o-ring to seal it, check the sketch.

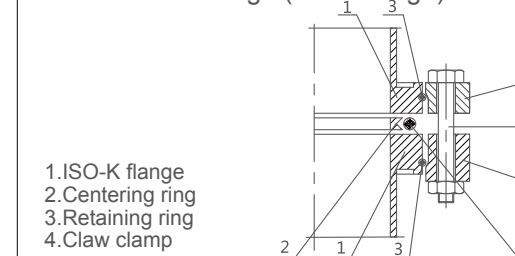




3.ISO-K Flange Connection

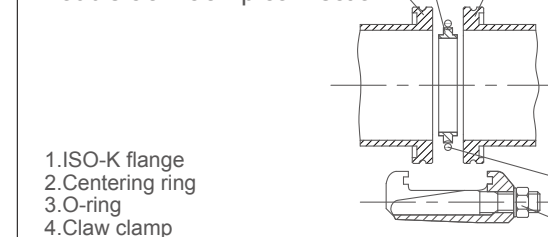
a.Use two rotatable flange (collar flange): use bolts to connect the flange via collar flange, use centering ring and o-ring to seal it, check the sketch.

Two rotatable flange (collar flange) connection



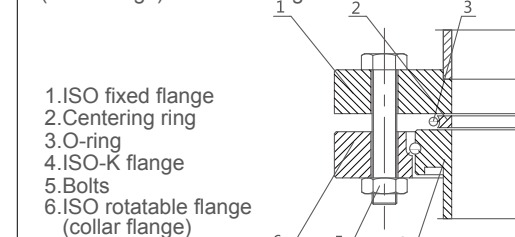
b.Use double claw clamp: use double claw clamp to connect the flange, use centering ring and o-ring to seal it, check the sketch.

Double claw clamp connection



c.Use bolts to connect the rotatable flange (collar flange) with fixed flange: collar flange and fixed flange match each other, use centering ring and o-ring to seal it, check the sketch.

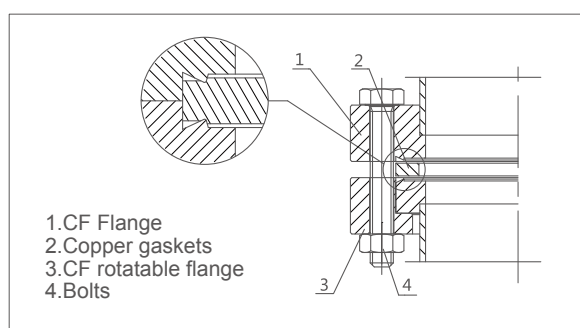
Bolts to connect the rotatable flange (collar flange) with fixed flange



Flanges And Fittings

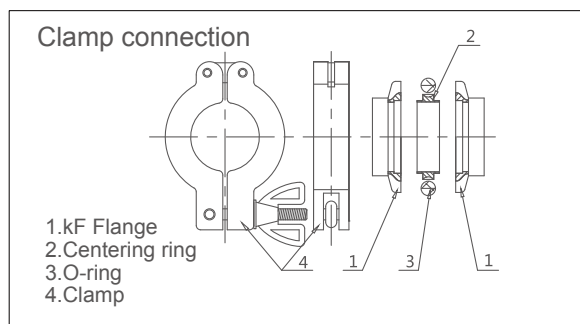
1.CF Flange Connection

Use bolts to connect the flanges, and oxygen-free copper gaskets to seal it, check the sketch.

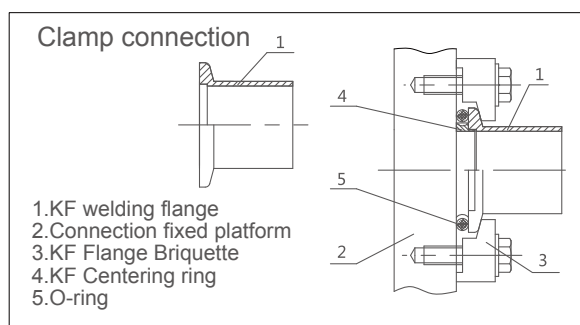


2.KF Flange Connection

a.Clamp connection: use clamp to connect the flange, use centering ring and o-ring to seal it, check the sketch.



b.Bolts connection: use KF Flange Briquette to connect the flange, use centering ring and o-ring to seal it, check the sketch.

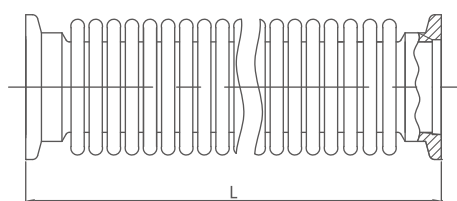


Flange Fittings



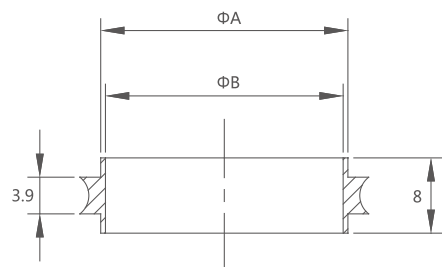
KF Series

KF Bellow



Type		16	25	40	50
L=300	Order no.	7001	7008	7015	7022
	weight/kg	0.20	0.25	0.45	0.60
L=500	Order no.	7002	7009	7016	7023
	weight/kg	0.25	0.30	0.60	0.80
L=600	Order no.	7003	7010	7017	7024
	weight/kg	0.30	0.32	0.65	0.90
L=800	Order no.	7004	7011	7018	7025
	weight/kg	0.38	0.40	0.80	1.00
L=1000	Order no.	7005	7012	7019	7026
	weight/kg	0.40	0.45	1.00	1.20
L=1500	Order no.	7006	7013	7020	7027
	weight/kg	0.60	0.65	1.35	1.70
L=2000	Order no.	7007	7014	7021	7028
	weight/kg	0.80	0.75	1.70	2.20

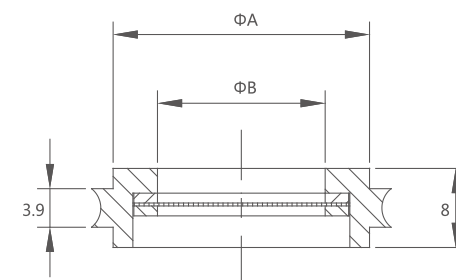
KF Centering Ring



Type	A	B	Order no.		weight/kg	
			Aluminum	304	Aluminum	304
10	12	10	7029	7034	0.004	0.012
16	17	16	7030	7035	0.008	0.023
25	26	25	7031	7036	0.010	0.029
40	41	40	7032	7037	0.012	0.035
50	52	50	7033	7038	0.025	0.073

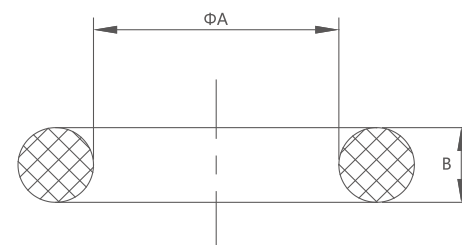
Flange Fittings

KF Centering Ring with Fine Filter



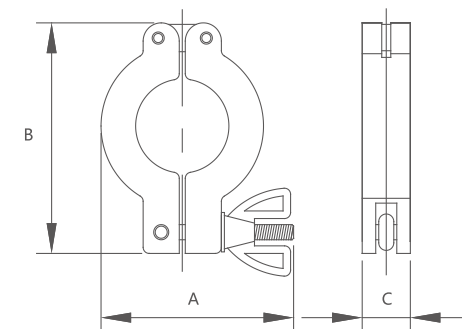
Type	A	B	Order no.		Order no.	weight kg
			diameter	hole		
16	17	11	0.2	1.0	7039	0.027
25	26	17	0.2	1.0	7040	0.038
40	41	31	0.2	1.0	7041	0.043
50	52	42	0.2	1.0	7042	0.090

O-Ring



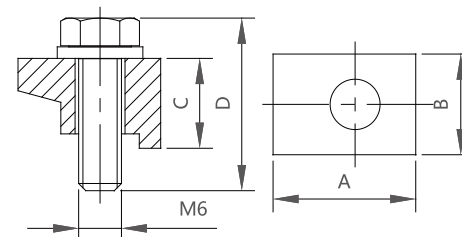
Type	A	B	Order no./weight kg	
			NBR	viton
10	15	5.3	7043/0.0005	7048/0.0005
16	18	5.3	7044/0.0008	7049/0.0008
25	28	5.3	7045/0.0010	7050/0.0010
40	42.5	5.3	7046/0.0013	7051/0.0013
50	54.5	5.3	7047/0.0015	7052/0.0015

KF Clamp



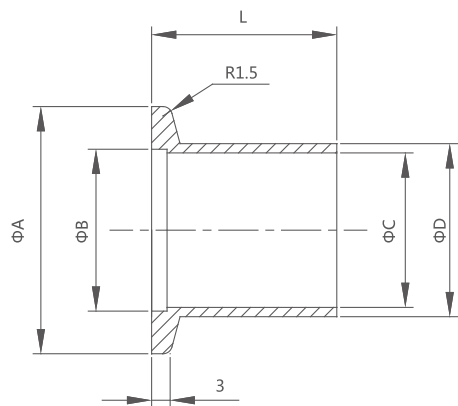
Type	A	B	C	Order no.	weight/kg	material
10	45	61	16	7053	0.15	Aluminum
16	45	61	16	7054	0.16	
25	55	72	16	7055	0.17	
40	70	90	18	7056	0.20	
50	97	123	24	7057	0.25	

KF Flange Briquette



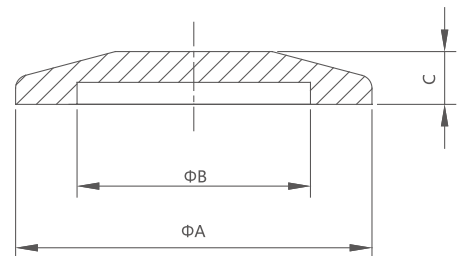
Type	A	B	C	D	Order no.	weight/kg	material
10	19.5	14	12.5	24	7058	0.10	Aluminum
16	19.5	14	12.5	24		0.10	
25	19.5	14	12.5	24		0.10	
40	19.5	14	12.5	24		0.10	
50	19.5	14	12.5	24		0.10	

KF Weld Flange



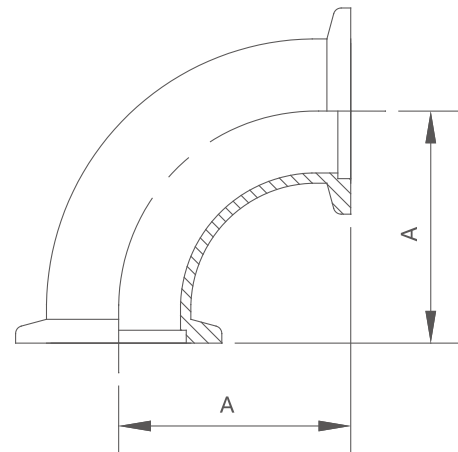
Type		10	16	25	40	50
A		30	30	40	55	75
B		12.2	17.2	26.2	41.2	52.2
C		10	16	25	40	50
D		14	20	28	44.5	54
L=12.7	Order no.	7063	7067	7071	7075	7079
	weight/kg	0.03	0.04	0.05	0.08	0.10
L=30	Order no.	7064	7068	7072	7076	7080
	weight/kg	0.03	0.05	0.06	0.12	0.20
L=40	Order no.	7065	7069	7073	7077	7081
	weight/kg	0.04	0.06	0.06	0.12	0.20
L=50	Order no.	7066	7070	7074	7078	7082
	weight/kg	0.05	0.07	0.10	0.20	0.25

KF Blank Flange



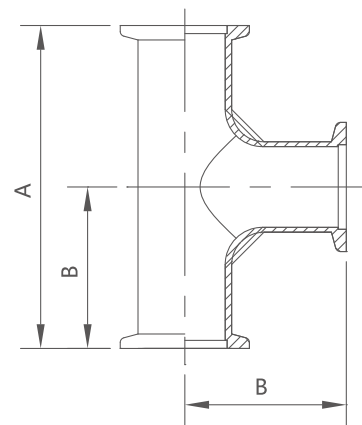
Type	A	B	C	Order no./weight kg	
				Aluminum	304
10	30	12.2	5	7083/0.007	7088/0.020
16	30	17.2	5	7084/0.010	7089/0.029
25	40	26.2	5	7085/0.020	7090/0.058
40	55	41.2	5	7086/0.070	7091/0.202
50	75	52.2	5	7087/0.100	7092/0.289

KF Elbow

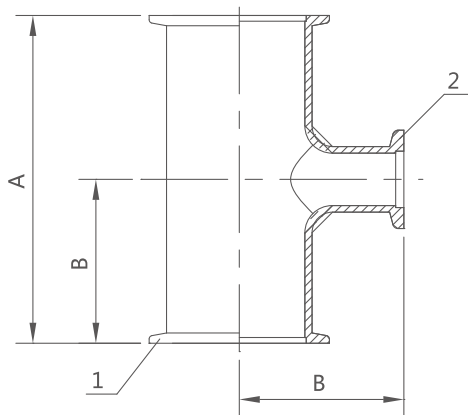


Type	A	Order no.	weight/kg
10	30	7098	0.08
16	40	7099	0.08
25	50	7100	0.15
40	65	7101	0.25
50	70	7102	0.40

KF Tee



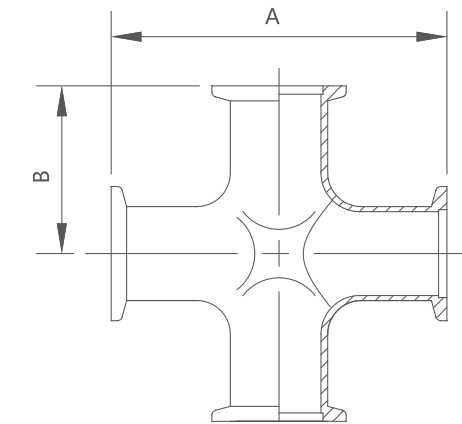
KF Reducing Tee



Type	A	B	Order no.	weight/kg
10	60	30	7108	0.15
16	80	40	7109	0.15
25	100	50	7110	0.25
40	130	65	7111	0.40
50	140	70	7112	0.45

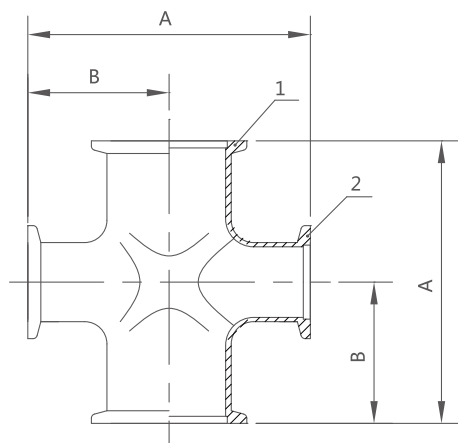
Type	A	B	1	2	Order no.	weight/kg
					right angle	right angle
25-16	100	50	KF25	KF16	7113	0.25
40-16	130	65	KF40	KF16	7114	0.35
40-25	130	65	KF40	KF25	7115	0.45
50-40	140	70	KF50	KF40	7116	0.52

KF Cross



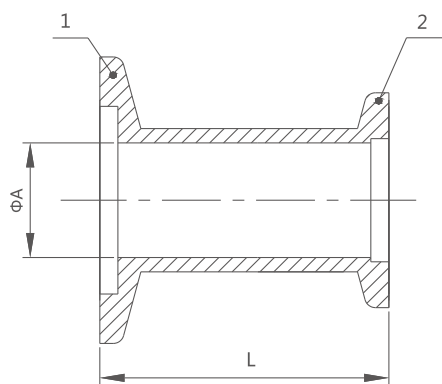
Type	A	B	Order no.	weight/kg
10	60	30	7122	0.10
16	80	40	7123	0.15
25	100	50	7124	0.25
40	130	65	7125	0.50
50	140	70	7126	0.73

KF Reducing Cross



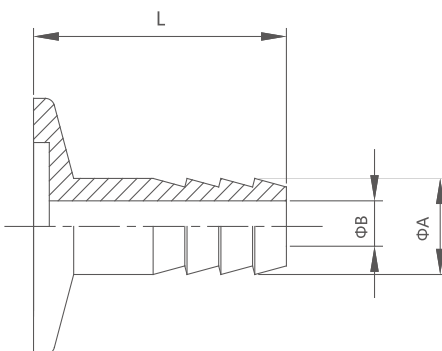
Type	A	B	1	2	Order no.	weight/kg
25-16	100	50	KF25	KF16	7127	0.30
40-16	130	65	KF40	KF16	7128	0.42
40-25	130	65	KF40	KF25	7129	0.50
50-40	140	70	KF50	KF40	7130	0.70

KF Reducer



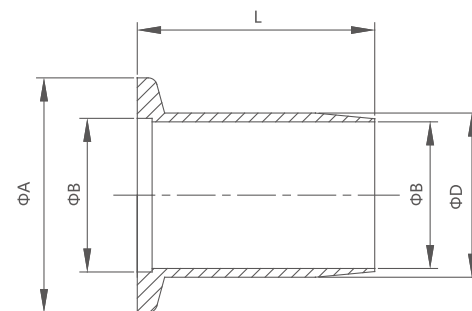
Type	A	L	1	2	Order no./weight kg	
					Aluminum	304
16-10	10	40	KF16	KF10	7131/0.03	7136/0.09
25-16	16	40	KF25	KF16	7132/0.04	7137/0.12
40-16	16	40	KF40	KF16	7133/0.04	7138/0.12
40-25	25	40	KF40	KF25	7134/0.05	7139/0.14
50-40	40	40	KF50	KF40	7135/0.08	7140/0.23

KF Nozzle



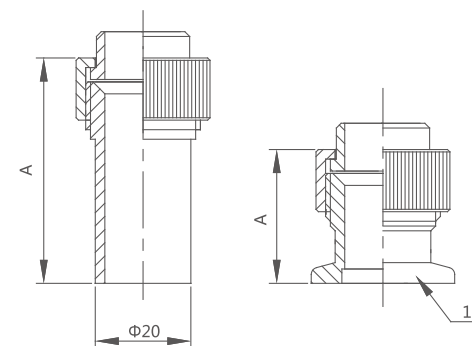
Type	A	B	L	Order no./weight kg		
				Chrome-plated steel	Aluminum	304
16	12	7	40	7141/0.07	7144/0.03	7147/0.07
25	12	7	40	7142/0.08	7145/0.03	7148/0.08
40	12	7	40	7143/0.12	7146/0.04/	7149/0.12

KF Adapter PVC Hose



Type	A	B	C	D	L	Order no./weight kg	
						Chrome-plated steel	Aluminum
10	30	12.2	10	14	40	7150/0.015	7155/0.04
16	30	17.2	15	19	40	7151/0.02	7156/0.06
25	40	26.2	22	26	40	7152/0.03	7157/0.09
40	55	41.2	37	41	40	7153/0.05	7158/0.14
50	75	52.4	47	51	40	7154/0.07	7159/0.20

KF Gauge Tube Adapter



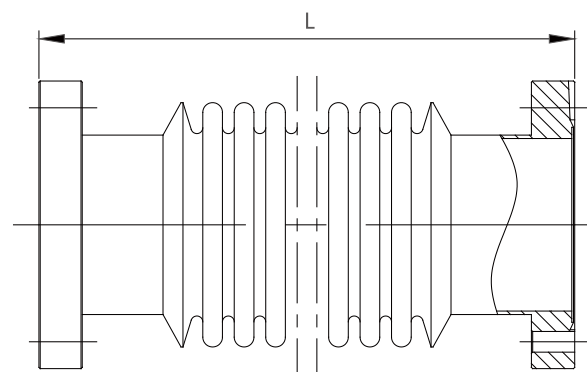
Type	A	1	Order no.	weight/kg
welding	50	Φ20	7160	0.12
16	40	KF16	7161	0.10
25	40	KF25	7162	0.12
40	50	KF40	7163	0.15

※ All of the above table does not indicate a material for stainless steel



CF Series

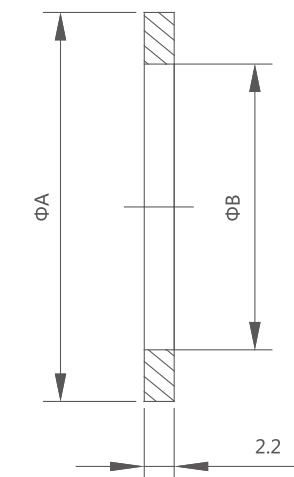
CF Flange Bellow



One side is rotatable flange

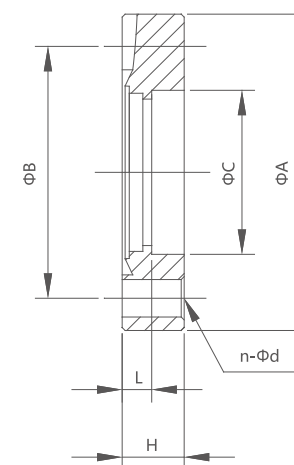
Type		16	25	35	50	63	100	150	200	250
L=250	Order no.	7301	7307	7313	7319	7325	7331	7337	7343	7349
	weight/kg	0.25	0.30	0.80	1.10	2.20	3.00	5.70	6.90	7.25
L=500	Order no.	7302	7308	7314	7320	7326	7332	7338	7344	7350
	weight/kg	0.30	0.40	1.00	1.20	2.40	3.20	5.90	7.10	7.40
L=750	Order no.	7303	7309	7315	7321	7327	7333	7339	7345	7351
	weight/kg	0.35	0.50	1.10	1.35	2.50	3.50	6.10	7.40	7.60
L=1000	Order no.	7304	7310	7316	7322	7328	7334	7340	7346	7352
	weight/kg	0.40	0.80	1.30	1.60	2.70	3.70	6.40	7.70	7.90
L=1500	Order no.	7305	7311	7317	7323	7329	7335	7341	7347	7353
	weight/kg	0.50	1.00	1.40	1.85	3.10	4.20	6.90	8.20	8.40
L=2000	Order no.	7306	7312	7318	7324	7330	7336	7342	7348	7354
	weight/kg	0.60	1.20	1.85	2.00	3.50	4.70	7.40	8.70	8.80

CF Flange Copper Gasket



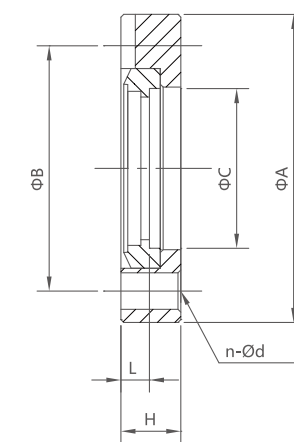
Type	A	B	Oxygen-free Copper	
			Order no.	weight/kg
16	21.3	16.2	7355	0.01
25	34.9	25.6	7356	0.01
35	48.1	36.8	7357	0.02
50	61.6	52	7358	0.02
63	82.4	63.6	7359	0.05
80	99	82	7360	0.07
100	120.5	101.7	7361	0.07
150	171.3	152.5	7362	0.10
200	222.1	203.3	7363	0.14
250	273.1	254	7364	0.20

CF Weld Flange



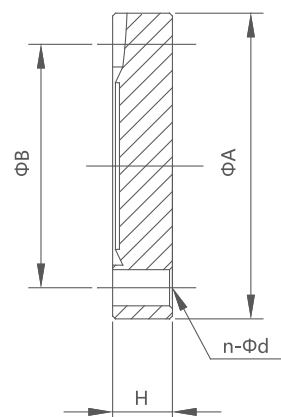
Type	A	B	C	H	L	n-d	Order no. weight/kg
16	34	27	18	7.3	4.3	6-4.3	7365/0.04
25	54	43	28	10.5	5	6-6.6	7366/0.13
35	70	58.7	38	13	5.5	6-6.6	7367/0.25
50	86	72.4	53	16	8	8-8.4	7368/0.45
63	114	92.2	66	17.5	9.5	8-8.4	7369/0.85
80	130	110	85	18	10	16-8.4	7370/1.00
100	152	130.3	104	20	11	16-8.4	7371/1.40
150	202	181	154	22	12.5	20-8.4	7372/2.25
200	253	231.8	205.5	24.5	12.5	24-8.4	7373/3.30
250	305	284	256.5	26	13	32-8.4	7374/3.60

CF Rotatable Flange



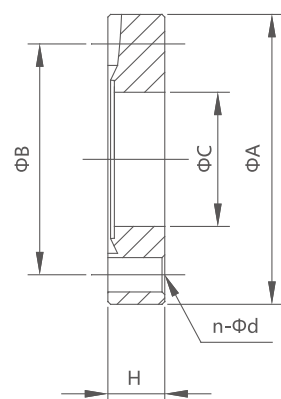
Type	A	B	C	H	L	n-d	Order no. weight/kg
16	34	27	18	7.3	4.3	6-4.3	7375/0.05
25	54	43	28	10.5	5.4	6-6.6	7376/0.15
35	70	58.7	38	13	5.5	6-6.6	7377/0.30
50	86	72.4	53	16	6.5	8-8.4	7378/0.45
63	114	92.2	66	19	9.5	8-8.4	7379/0.80
80	130	110	85	18	9.5	16-8.4	7380/1.00
100	152	130.3	104	21.5	11.1	16-8.4	7381/1.40
150	202	181	154	24	12.6	20-8.4	7382/2.10
200	253	231.8	205.5	24.5	12.6	24-8.4	7383/3.00
250	305	284	256.5	26	13	32-8.4	7384/4.00

CF Blank Flange



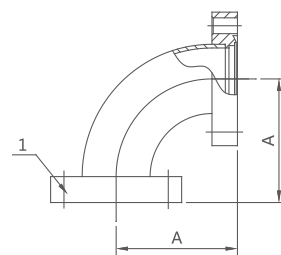
Type	A	B	H	n-d	Order no.	weight/kg
16	34	27	7.3	6-4.3	7385	0.05
25	54	43	10.5	6-6.6	7386	0.18
35	70	58.7	13	6-6.6	7387	0.35
50	86	72.4	16	8-8.4	7388	0.40
63	114	92.2	17.5	8-8.4	7389	1.40
80	130	110	18	16-8.4	7390	1.80
100	152	130.3	20	16-8.4	7391	2.80
150	202	181	22	20-8.4	7392	5.25
200	253	231.8	24.5	24-8.4	7393	9.40
250	305	284	26	32-8.4	7394	14.00

CF Viewport Flange



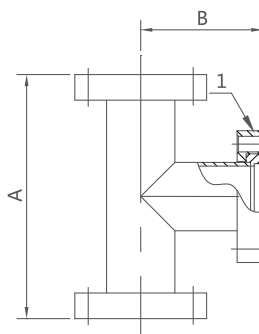
Type	A	B	C	H	n-d	Order no.	weight/kg
16	34	27	14	10	6-4.3	7395	0.06
25	54	43	22	16	6-6.6	7396	0.20
35	70	58.7	34	16.5	6-6.6	7397	0.32
50	86	72.4	47	18	8-8.4	7398	0.51
63	114	92.2	64	20	8-8.4	7399	0.96
80	130	110	82	20	16-8.4	7400	1.12
100	152	130.3	104	20	16-8.4	7401	1.40
150	202	181	155	22	20-8.4	7402	2.25
200	253	231.8	190	27	24-8.4	7403	3.67

CF Elbow



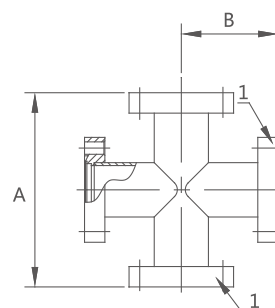
Type	A	1	Order no.	weight/kg
16	38	Loose Flange	7414	0.22
25	58	Loose Flange	7415	0.45
35	63	Loose Flange	7416	0.68
50	80	Loose Flange	7417	1.59
63	105	Loose Flange	7418	2.27
80	118	Loose Flange	7419	3.40
100	135	Loose Flange	7420	4.99
150	167	Loose Flange	7421	8.62
200	203	Loose Flange	7422	12.25

CF Tee



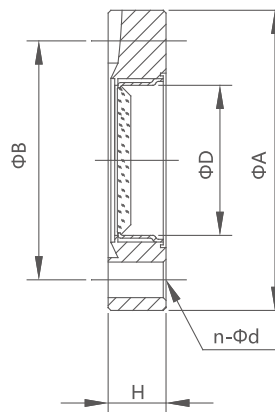
Type	A	B	1	Order no.	weight/kg
16	76	38	Loose Flange	7424	0.23
25	116	58	Loose Flange	7425	0.68
35	126	63	Loose Flange	7426	0.90
50	160	80	Loose Flange	7427	1.80
63	210	105	Loose Flange	7428	3.63
80	236	118	Loose Flange	7429	5.30
100	270	135	Loose Flange	7430	6.80
150	334	167	Loose Flange	7431	10.89
200	406	203	Loose Flange	7432	11.79
250	416	208	Loose Flange	7433	17.24

CF Cross



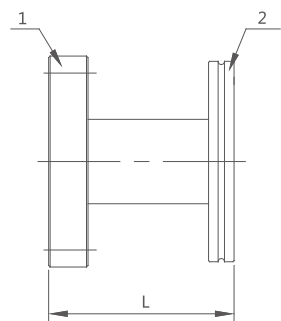
Type	A	B	1	Order no.	weight/kg
16	76	38	Loose Flange	7434	0.34
25	116	58	Loose Flange	7435	0.79
35	126	63	Loose Flange	7436	1.13
50	160	80	Loose Flange	7437	2.04
63	210	105	Loose Flange	7438	5.67
80	236	118	Loose Flange	7439	6.90
100	270	135	Loose Flange	7440	8.85
150	334	167	Loose Flange	7441	14.52
200	406	203	Loose Flange	7442	21.32
250	416	208	Loose Flange	7443	27.22

CF Viewport



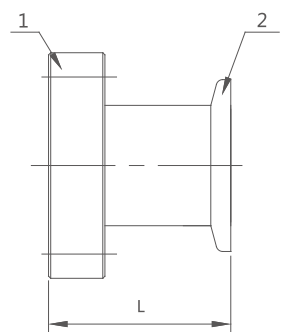
Type	A	B	D	H	n-d	Order no.	weight/kg
16	34	27	10	10	6-4.3	7444	0.28
25	54	43	16	16	6-6.6	7445	0.41
35	70	58.7	28	16.5	6-6.6	7446	0.63
50	86	72.4	41	18	8-8.4	7447	1.00
63	114	92.2	58	20	8-8.4	7448	1.10
80	130	110	76	20	16-8.4	7449	1.38
100	152	130.3	98	20	16-8.4	7450	1.60
150	202	181	148	22	20-8.4	7451	2.60
200	253	231.8	183	27	24-8.4	7452	3.60

CF to ISO-K Reducer



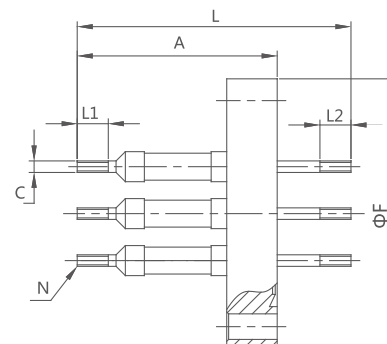
Type	L	1	2	Order no.	weight/kg
CF63-LF63	110	CF63	LF63	7453	1.36
CF100-LF80	112	CF100	LF80	7454	1.81
CF100-LF100	112	CF100	LF100	7455	2.27
CF150-LF160	114	CF150	LF160	7456	4.08
CF200-LF200	116	CF200	LF200	7457	7.26

CF to KF Reducer



Type	L	1	2	Order no.	weight/kg
CF16-KF16	42	CF16	KF16	7458	0.23
CF35-KF25	46	CF35	KF25	7459	0.45
CF35-KF40	46	CF35	KF40	7460	0.60
CF50-KF50	46	CF50	KF50	7461	0.95
CF63-KF50	50	CF63	KF50	7462	1.36

CF Feedthrough



Type	Flange	F	C	L	A	L1	L2	Pole material	current(A)	Voltage(kV)	N	Order no.	Order no. (kg)
16-1	CF16	34	1	66	49	—	—	4J29	1.5	2	2	7463	0.05
16-M2			M2	52	38	10	12	4J29	5	5	1	7464	0.06
16-M2			M2	52	38	10	12	4J29	5	5	2	7465	0.07
16-M3			M3	60	48	10	12	4J29	10	5	1	7466	0.06
25-2	CF25	54	2	52	38	—	—	4J29	5	5	4	7467	0.20
25-M2			M2	52	38	10	12	4J29	5	5	2	7468	0.18
25-M3			M3	60	48	10	12	4J29	10	5	2	7469	0.18
25-M6			M6	59	41	12	18	TU1	40	2	1	7470	0.20
35-2	CF35	70	2	52	38	—	—	4J29	5	5	6	7471	0.38
35-M2			M2	52	38	10	12	4J29	5	5	4	7472	0.35
35-M3			M3	60	48	10	12	4J29	10	5	4	7473	0.36
35-M6			M6	59	41	12	18	TU1	40	2	1	7474	0.38
50-2	CF50	86	2	52	38	—	—	4J29	5	5	8	7475	0.41
50-M2			M2	52	38	10	12	4J29	5	5	6	7476	0.40
50-M3			M3	60	48	10	12	4J29	10	5	6	7477	0.41
50-M6			M6	59	41	12	18	TU1	40	2	2	7478	0.42
63-2	CF63	114	2	52	38	—	—	4J29	5	5	12	7479	1.42
63-M2			M2	52	38	10	12	4J29	5	5	10	7480	1.40
63-M3			M3	60	48	10	12	4J29	10	5	10	7481	1.44
63-M6			M6	59	41	12	18	TU1	40	2	4	7482	1.43
100-2	CF100	152	2	52	38	—	—	4J29	5	5	16	7483	2.80
100-M2			M2	52	38	10	12	4J29	5	5	14	7484	2.60
100-M3			M3	60	48	10	12	4J29	10	5	14	7485	3.00
100-M6			M6	59	41	12	18	TU1	40	2	6	7486	3.02

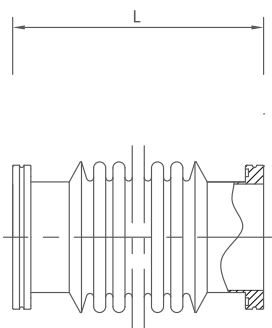
Remark: In addition to the standard electrode number N, the other can also be customized, all the needle electrodes can be separate ordersto buy, please specify when ordering.
※ All of the above table does not indicate a material for 304.

Flange Fittings



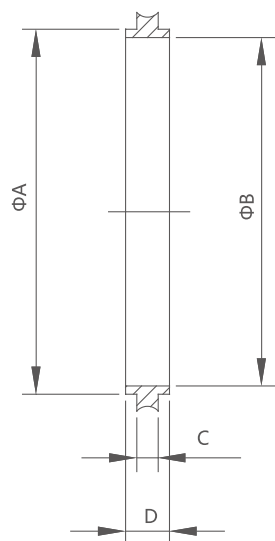
ISO-K Series

ISO-K Bellow



Type		63	80	100	160	200	250
L=250	Order no.	7601	7607	7613	7619	7625	7631
	weight/kg	1.00	1.20	1.35	1.64	2.10	2.80
L=500	Order no.	7602	7608	7614	7620	7626	7632
	weight/kg	1.15	1.30	1.50	1.80	2.40	3.20
L=750	Order no.	7603	7609	7615	7621	7627	7633
	weight/kg	1.30	1.50	1.70	2.00	2.60	3.40
L=1000	Order no.	7604	7610	7616	7622	7628	7634
	weight/kg	1.50	1.70	2.00	2.30	2.90	3.70

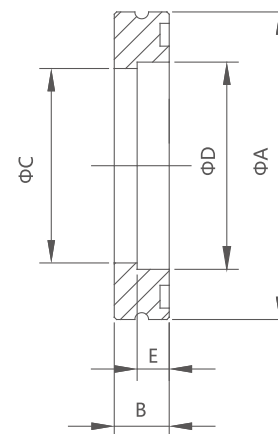
ISO-K Centering Ring



Type	A	B	C	D	Order no. / weight/kg	
					Aluminum	304
63	70	67	3.9	8	7637/0.02	7647/0.06
80	83	80	3.9	8	7638/0.03	7648/0.09
100	102	99	3.9	8	7639/0.03	7649/0.09
160	153	150	3.9	8	7640/0.04	7650/0.12
200	213	210	3.9	8	7641/0.05	7651/0.15
250	261	258	3.9	8	7642/0.08	7652/0.23
320	318	313	5.6	14	7643/0.20	7653/0.58
400	400	395	5.6	14	7644/0.25	7654/0.72

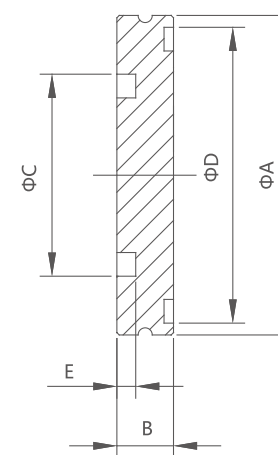
Flange Fittings

ISO-K Weld Flange



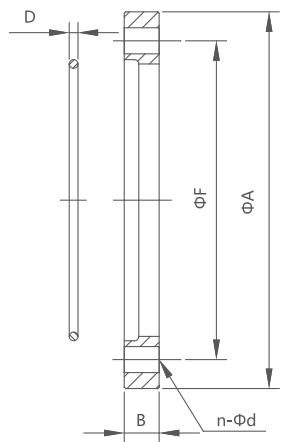
Type	A	B	C	D	E	Order no.	weight/kg
16	35	8	17.2	20	4	7685	0.07
25	45	8	26.2	30	4	7686	0.08
40	65	12	41.2	45	6	7687	0.10
50	75	12	52.2	57	6	7688	0.15
63	95	12	70	76	6	7689	0.26
80	110	12	83	89	6	7690	0.31
100	130	12	102	108	6	7691	0.38
160	180	12	153	159	6	7692	0.52
200	240	12	213	219	6	7693	0.71
250	290	12	261	267	6	7694	0.94
320	370	17	318	324	9	7695	3.32
400	450	17	400	406	9	7696	3.91
500	550	17	501	508	9	7697	4.63
630	690	22	651	660	12	7698	5.45

ISO-K Blank Flange



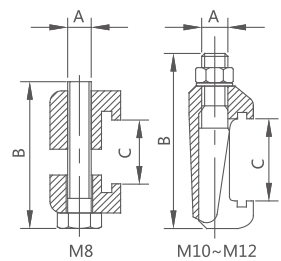
Type	A	B	C	D	E	Order no.	weight/kg
16	35	8	17.2	30	3	7699	0.25
25	45	8	26.2	40	3	7700	0.29
40	65	12	41.2	60	4.5	7701	0.35
50	75	12	52.2	70	4.5	7702	0.42
63	95	12	70	90	4.5	7703	0.66
80	110	12	83	105	4.5	7704	0.89
100	130	12	102	125	4.5	7705	1.24
160	180	12	153	175	4.5	7706	2.38
200	240	12	213	235	4.5	7707	4.23
250	290	12	261	285	4.5	7708	6.18
320	370	17	318	365	6.5	7709	14.25
400	450	17	400	445	6.5	7710	21.07
500	550	17	501	545	6.5	7711	31.49
630	690	22	651	685	6.5	7712	64.13

ISO Rotatable Flange



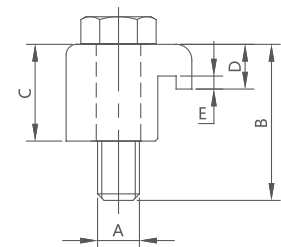
Type	A	B	D	F	n-d	Order no. / weight/kg	
						Carbon Steel	304
16	60	8	2	45	4-6.6	—	7713/0.17
25	70	8	2	55	4-6.6	—	7714/0.25
40	100	12	3	80	4-9	—	7715/0.30
50	110	12	3	90	4-9	—	7716/0.43
63	130	12	3	110	4-9	7727/0.55	7717/0.55
80	145	12	3	125	8-9	7728/0.62	7718/0.62
100	165	12	3	145	8-9	7729/0.72	7719/0.72
160	225	16	5	200	8-11	7730/1.73	7720/1.73
200	285	16	5	260	12-11	7731/2.24	7721/2.24
250	335	16	5	310	12-11	7732/2.68	7722/2.68
320	425	20	5	395	12-14	7733/5.23	7723/5.23
400	510	20	8	480	16-14	7734/6.90	7724/6.90
500	610	20	8	580	16-14	7735/8.35	7725/8.35
630	750	24	10	720	20-14	7736/12.40	7726/12.40

ISO-K Claw Clamp



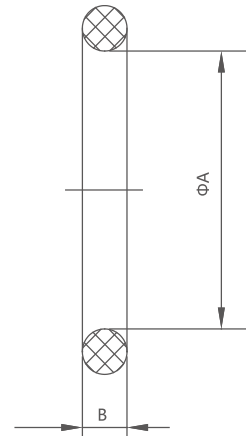
Type	A	B	C	range	Order no. / weight/kg	
					Aluminum	Chrome-plated steel
M8	M8	50	13~25	63~150	7737/0.15	—
M10	M10	60	18~28	63~250	—	7738/0.20
M12	M12	78	28~38	320~630	—	7739/0.25

ISO-K Half Claw Clamp



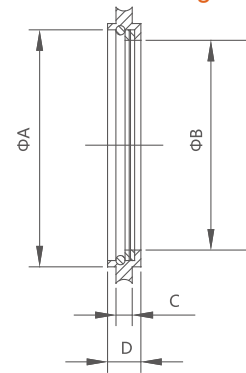
Type	A	B	C	D	E	range	Order no. / weight/kg	
							Aluminum	Chrome-plated steel
M8	M8	30	18.6	8.6	2.5	63~100	7817/0.05	7820/0.15
M10	M10	35	19	9	2.5	160~250	7818/0.05	7821/0.15
M12	M12	45	31	16	2.5	320~500	7819/0.07	7822/0.19
M12L	M12	50	36	16	2.5	630	—	7823/0.24

O-Ring



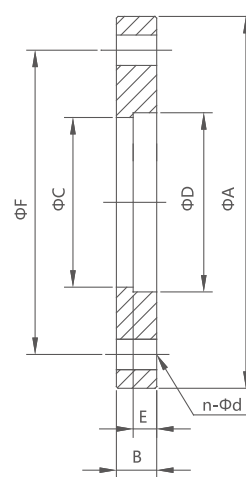
Type	A	B	Order no.		weight/kg	
			NBR	Viton	NBR	Viton
63	75	5.3	7665	7675	0.010	0.015
80	85	5.3	7666	7676	0.010	0.015
100	106	5.3	7667	7677	0.015	0.020
160	155	5.3	7668	7678	0.020	0.025
200	212	5.3	7669	7679	0.025	0.030
250	258	5.3	7670	7680	0.030	0.035
320	325	7	7671	7681	0.035	0.040
400	400	7	7672	7682	0.040	0.045
500	500	7	7673	7683	0.045	0.050
630	650	7	7674	7684	0.050	0.060

ISO-K Centering Ring with Fine Filter



Type	A	B	C	D	filter		Order no.	weight/kg
					diameter	hole		
63	70	62	3.9	8	0.2	1.0	7657	0.07
80	83	74	3.9	8	0.2	1.0	7658	0.10
100	102	94	3.9	8	0.2	1.0	7659	0.11
160	153	143	3.9	8	0.2	1.0	7660	0.13
200	213	202	3.9	8	0.4	1.0	7661	0.16
250	261	249	3.9	8	0.4	1.0	7662	0.24

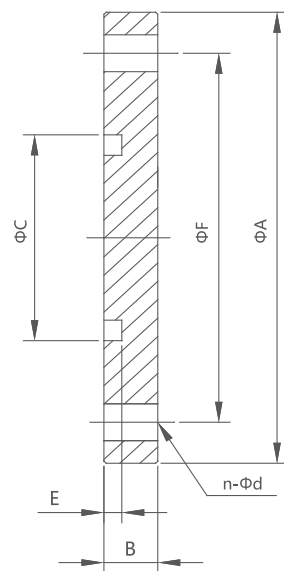
ISO-F Weld Flange



Type	A	B	C	D	E	F	n-d	Order no. / weight/kg
16	60	8	17.2	20	4	45	4-6.6	7740/0.22
25	70	8	26.2	30	4	55	4-6.6	7741/0.31
40	100	12	41.2	45	6	80	4-9	7742/0.45
50	110	12	52.2	57	6	90	4-9	7743/0.59
63	130	12	70	76	6	110	4-9	7744/0.82
80	145	12	83	89	6	125	8-9	7745/0.96
100	165	12	102	108	6	145	8-9	7746/1.14
160	225	16	153	159	6	200	8-11	7747/2.48
200	285	16	213	219	6	260	12-11	7748/3.26
250	335	16	261	267	6	310	12-11	7749/4.00
320	425	20	318	324	9	395	12-14	7750/9.26
400	510	20	400	406	9	480	16-14	7751/11.66
500	610	20	501	508	9	580	16-14	7752/13.97
630	750	24	651	660	12	720	20-14	7753/18.65

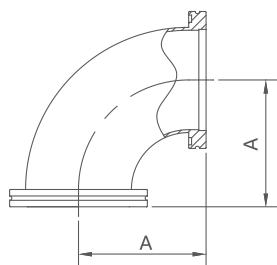
Flange Fittings

ISO-F Blank Flange



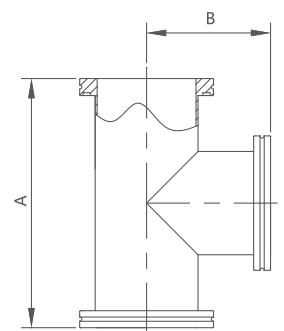
Type	A	B	C	E	F	n-d	Order no.	weight/kg
16	60	8	17.2	3	45	4-6.6	7754	0.34
25	70	8	26.2	3	55	4-6.6	7755	0.42
40	100	12	41.2	4.5	80	4-9	7756	0.60
50	110	12	52.2	4.5	90	4-9	7757	0.78
63	130	12	70	4.5	110	4-9	7758	1.24
80	145	12	83	4.5	125	8-9	7759	1.54
100	165	12	102	4.5	145	8-9	7760	2.00
160	225	16	153	4.5	200	8-11	7761	4.96
200	285	16	213	4.5	260	12-11	7762	7.96
250	335	16	261	4.5	310	12-11	7763	11.00
320	425	20	318	6.5	395	12-14	7764	22.12
400	510	20	400	6.5	480	16-14	7765	31.85
500	610	20	501	6.5	580	16-14	7766	45.57
630	750	24	651	6.5	720	20-14	7767	82.66

ISO-K Elbow



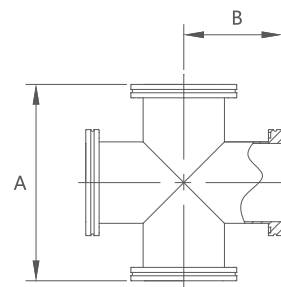
Type	A	Order no.	weight/kg
63	88	7774	0.91
80	108	7775	1.81
100	108	7776	2.72
160	138	7777	5.44
200	178	7778	6.35

ISO-K Tee



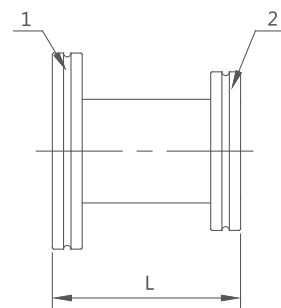
Type	A	B	Order no.	weight/kg
63	176	88	7780	1.36
80	216	108	7781	2.27
100	216	108	7782	3.63
160	276	138	7783	5.90
200	356	178	7784	8.16
250	416	208	7785	10.89

ISO-K Cross



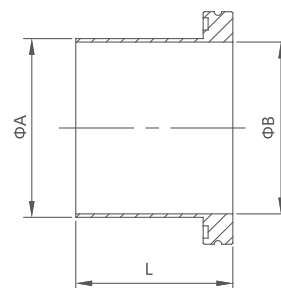
Type	A	B	Order no.	weight/kg
63	176	88	7786	2.72
80	216	108	7787	3.63
100	216	108	7788	4.54
160	276	138	7789	6.80
200	356	178	7790	9.53
250	416	208	7791	11.34

ISO-K Reducer



Type	L	1	2	Order no.	weight/kg
80-63	50	LF80	LF63	7792	1.20
100-63	50	LF100	LF63	7793	1.30
100-80	50	LF100	LF80	7794	2.27
160-63	50	LF160	LF63	7795	2.40
160-80	50	LF160	LF80	7796	2.55
160-100	50	LF160	LF100	7797	2.70
200-63	80	LF200	LF63	7798	2.20
200-80	80	LF200	LF80	7799	2.80
200-100	80	LF200	LF100	7800	3.40
200-160	80	LF200	LF160	7801	6.12
250-63	80	LF250	LF63	7802	4.20
250-80	80	LF250	LF80	7803	4.80
250-100	80	LF250	LF100	7804	5.10
250-160	80	LF250	LF160	7805	6.80
250-200	80	LF250	LF200	7806	8.16

ISO-K Half Nipple



Type	A	B	L	Order no.	weight/kg
63	76	70	100	7807	0.75
80	89	83	100	7808	1.10
100	108	102	100	7809	2.70
160	159	153	100	7810	4.10
200	219	213	100	7811	5.70
250	267	261	100	7812	6.10
320	324	318	100	7813	6.50
400	406	400	100	7814	7.10
500	508	501	100	7815	9.98
630	660	651	100	7816	13.61

※ All of the above table does not indicate a material for 304.



Cx₂ Gas Seal Plug

Brief Introduction

As a connector used for the current input to the vacuum chamber (pipe), connect the electronic devices and power supply, electrical inter-connection. Or connect the electrical wires and cables.

Characteristics

Military standard, good performance, easy installation, small size and low cost.

Order No.

You can get the Order No. from the following table according to the needle number of the plug.

Order Example: 7852

CX2 Gas seal common Plug, 2 needles diameterΦ1

Major Capacity Targets

- Rated voltage: 220V
- Insulated resistance: $\geq 1000\text{M}\Omega$ (500V, DC)
- Pressure-proof: 1000V
- Leak tightness:
When the pressure= $1.33 \times 10^{-4}\text{Pa}$, Air leakage $\leq 1\text{Pa} \cdot \text{cm}^3/\text{s}$
- Operation times: 500 times
- Rated current and contact resistance

Diameter of needle (mm)	Φ1	Φ1.5	Φ2	Φ3
Rated current (A)	5	10	20	30
Contact resistance (Ω)	≤ 20	≤ 12	≤ 10	≤ 8

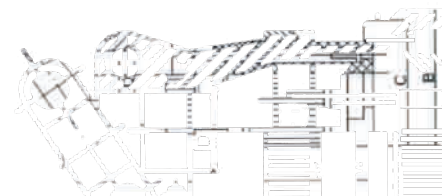
Remark: Each needle has the rated current as follows according to the number of needle:

The rated current will be 100% if with 1~16 needles. The rated current will be 80% if with 17~32 needles.

The rated current will be 70% if with 33~55 needles. The rated current will be 60% if with 56~96 needles.

Installation and External Dimensions

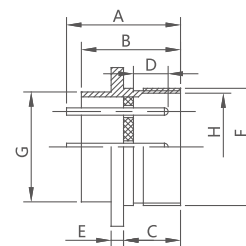
Common (unshielded) plug



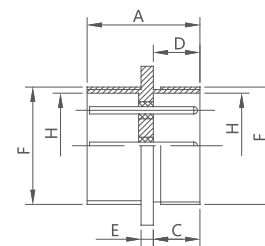
Order No.	Model	A	B	C	D	Needle
7851	CX ₂ 12K1Q	34	Φ17	M12×0.75	6	1 needle Φ1.5
7852	CX ₂ 12K2Q	34	Φ17	M12×0.75	6	2 needles Φ1
7853	CX ₂ 12K3Q	34	Φ17	M12×0.75	6	3 needles Φ1
7854	CX ₂ 12K4Q	34	Φ17	M12×0.75	6	4 needles Φ1
7855	CX ₂ 15K8Q	40	Φ22	M17×1	10	8 needles Φ1
7856	CX ₂ 23K4Q	40	Φ29	M24×1	11	4 needles Φ3
7857	CX ₂ 23K5Q	40	Φ29	M24×1	11	3 needles Φ3 2 needles Φ1
7858	CX ₂ 23K6Q	40	Φ29	M24×1	11	3 needles Φ1
7859	CX ₂ 23K8Q	40	Φ29	M24×1	11	4 needles Φ1 2 needles Φ1.5 2 needles Φ3
7860	CX ₂ 23K12Q	40	Φ29	M24×1	11	10 needles Φ1 2 needles Φ1.5
7861	CX ₂ 23K19Q	40	Φ29	M24×1	11	19 needles Φ1
7862	CX ₂ 28K31Q	40	Φ36	M30×1	15	29 needles Φ1 2 needles Φ2
7863	CX ₂ 33K55Q	45	Φ41	M36×1.5	17	55 needles Φ1
7864	CX ₂ 47K92Q	50	Φ56	M48×1.5	28	92 needles Φ1

Socket

Common Socket

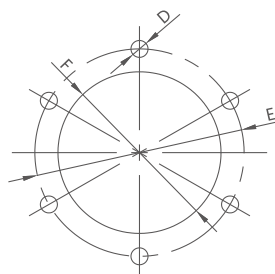
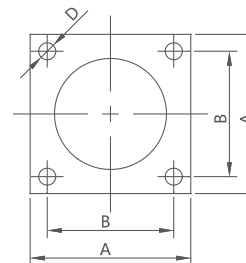


Bulkhead Socket



	Order No.	Model	A	B	C	D	E	F	G	H	Equipped plug
Common	7865	CX ₂ 12J1M	18	15	9	7	1.5	M12×0.75	Φ12	Φ10	CX ₂ 12K1Q
	7866	CX ₂ 12J2M	18	15	9	7	1.5	M12×0.75	Φ12	Φ10	CX ₂ 12K2Q
	7867	CX ₂ 12J3M	18	15	9	7	1.5	M12×0.75	Φ12	Φ10	CX ₂ 12K3Q
	7868	CX ₂ 12J4M	18	15	9	7	1.5	M12×0.75	Φ12	Φ10	CX ₂ 12K4Q
	7869	CX ₂ 15J8M	19.5	15	10	7	2	M17×1	Φ15	Φ14	CX ₂ 15K8Q
	7870	CX ₂ 23J4M	23	20	11.5	7	2.5	M24×1	Φ22.5	Φ21	CX ₂ 23K4Q
	7871	CX ₂ 23J5M	23	20	11.5	7	2.5	M24×1	Φ22.5	Φ21	CX ₂ 23K5Q
	7872	CX ₂ 23J6M	23	20	11.5	7	2.5	M24×1	Φ22.5	Φ21	CX ₂ 23K6Q
	7873	CX ₂ 23J8M	23	20	11.5	7	2.5	M24×1	Φ22.5	Φ21	CX ₂ 23K8Q
	7874	CX ₂ 23J12M	23	20	11.5	7	2.5	M24×1	Φ22.5	Φ21	CX ₂ 23K12Q
	7875	CX ₂ 23J19M	23	20	11.5	7	2.5	M24×1	Φ22.5	Φ21	CX ₂ 23K19Q
	7876	CX ₂ 28J31M	22.5	20	11.5	7	2.5	M30×1	Φ28	Φ27	CX ₂ 28K31Q
Bulkhead	7877	CX ₂ 33J55M	23	20	11.5	7	2.5	M36×1.5	Φ33	Φ32	CX ₂ 33K55Q
	7878	CX ₂ 47J92M	23	20	11.5	8	2.5	M48×1.5	Φ47	Φ44.1	CX ₂ 47K92Q
	7879	CX ₂ 24J19C	23.5	-	10	9.5	2.5	M24×1	Φ24	Φ21	CX ₂ 23K19Q
	7880	CX ₂ 30J31C	23.5	-	10.5	8.5	2.5	M30×1	Φ30	Φ27	CX ₂ 28K31Q
	7881	CX ₂ 36J55C	23.5	-	9.5	10	2.5	M36×1.5	Φ36	Φ32	CX ₂ 33K55Q
	7882	CX ₂ 49J92C	23	-	9	8.5	3	M48×1.5	Φ48.5	Φ44.1	CX ₂ 47K92Q

Installation dimension with the holes



Model	A	B	C	D	E	F
CX ₂ 12J1(1~4)M	20	15	Φ12.5	Φ2.5	—	—
CX ₂ 15J8M	23	18	Φ15.5	Φ2.5	—	—
CX ₂ 23J4M	33	26	Φ23	Φ3.5	—	—
CX ₂ 23J5M	33	26	Φ23	Φ3.5	—	—
CX ₂ 23J6M	33	26	Φ23	Φ3.5	—	—
CX ₂ 23J8M	33	26	Φ23	Φ3.5	—	—
CX ₂ 23J12M	33	26	Φ23	Φ3.5	—	—
CX ₂ 23J19M	33	26	Φ23	Φ3.5	—	—
CX ₂ 28J31M	38	31	Φ28.5	Φ3.5	—	—
CX ₂ 33J55M	—	—	—	Φ3.5	Φ43	Φ33.5
CX ₂ 47J92M	—	—	—	Φ4.5	Φ61	Φ47.5
CX ₂ 30J31C	33	26	Φ24.5	Φ3.5	—	—
CX ₂ 24J19C	38	31	Φ30.5	Φ3.5	—	—
CX ₂ 36J55C	—	—	—	Φ3.5	Φ43	Φ36.5
CX ₂ 49J92C	—	—	—	Φ4.5	Φ72	Φ49

Bellow



Hydraulic-formed bellows

Introduction

Hydraulic-formed bellows is a thin-walled stainless steel belt is made of waveform reprocessing, after welding pipe. Good bending, high temperature (196 ℃ ~ 450 ℃), high pressure resistance, corrosion resistance. It is widely used in aerospace, metallurgy, petrochemical, semiconductor, vacuum equipment, and many other fields.

Type

SA type

Waveform axial profile is U shape, single-wave tube body, small size and high voltage.

OS type

Waveform axial profile is U shape single tube body, wall thinness and softer, caliber is complete from small to big.

OA type

Waveform axial profile is U shape single tube body, wall thickness and softer.

Order information

Customers can search the Order No. according to the different dimensions. If 316L is needed, please remark that when you order the bellow. example :6006; OS type bellow, 65A.

Specifications and dimensions

Model		Diameter (mm)	Size (mm)			Bending radius (mm)			Weight (kg/m)	Max. pressure (MPa)
			ID	OD	Wall thickness	bellows distance	Fixed	Repeated		
SA	6029	6	5.5	8.5	0.15	1.75	50	110	0.1	9.0
	6030	7	7.2	12.2	0.25	2.5	65	145	0.1	10.0
	6031	10	10	16	0.25	3	80	180	0.2	10.0
	6032	12	12	17.5	0.25	3.3	95	215	0.2	10.0
OS	6055	16	16.2	23.8	0.2	3.8	120	270	0.2	4.0
	6056	20	21	29.5	0.2	4.0	160	360	0.3	4.0
	6001	25	26	35.5	0.2	5.2	175	400	0.3	2.5
	6003	40	40	54	0.25	6.2	280	640	0.7	2.0
	6005	50	50	65	0.25	6.5	350	800	0.9	1.6
	6006	65	67	83	0.25	9.0	390	845	1.1	1.6
	6007	80	80	95	0.25	9.8	480	1000	1.1	1.6
	6008	100	104	121	0.25	10	600	1200	1.4	1.6
OA	6061	20	19	26	0.3	4.2	95	340	0.3	5.0
	6062	25	25.5	34	0.3	4.5	100	350	0.4	2.5
	6063	40	39	49	0.35	5.5	200	520	0.8	2.5
	6064	50	50	62	0.4	6	240	560	1.1	2.5
	6065	65	64	86	0.5	8	320	740	1.3	2.0
	6066	80	77	99	0.5	10	400	950	1.5	2.0
	6067	100	101.5	125.5	0.5	12	450	1100	1.7	1.6
	6068	125	127	152	0.6	14	520	1350	2.0	1.6
	6069	150	150.5	178.5	0.6	15	540	1350	2.3	1.6

Bellow



Welding Bellow

Parameters

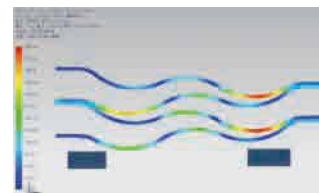
Inner pressure: vacuum

Outer pressure: Atmospheric pressure

Material: 316L/AM350/304

Leak rating: $\leq 1.3 \times 10^{-7}$ Pa·L·s⁻¹

Using temperature: -250℃ ~ 450℃



Specifications

Order no.	ID	OD	Bellows Distance	Order no.	ID	OD	Bellows Distance
6101	Φ6.20	Φ19.00	0.8	6138	Φ47.90	Φ70.00	2.1
6102	Φ10.00	Φ20.00	0.8	6139	Φ49.05	Φ62.40	1.3
6103	Φ10.00	Φ22.00	0.8	6140	Φ50.80	Φ76.20	2.5
6104	Φ12.40	Φ26.00	1.2	6141	Φ52.00	Φ65.40	1.3
6105	Φ13.65	Φ34.10	1.6	6142	Φ50.00	Φ80.00	1.6
6106	Φ14.40	Φ24.70	0.7	6143	Φ57.00	Φ73.00	1.3
6107	Φ16.00	Φ25.00	0.8	6144	Φ57.00	Φ100.00	3.5
6108	Φ16.00	Φ31.50	1.3	6145	Φ58.00	Φ80.00	1.5
6109	Φ18.40	Φ28.70	0.7	6146	Φ58.70	Φ71.60	1.3
6110	Φ19.00	Φ30.00	1.28	6147	Φ61.60	Φ75.00	1.3
6111	Φ19.00	Φ31.70	1.28	6148	Φ64.80	Φ81.20	1.3
6112	Φ18.90	Φ44.50	2	6149	Φ65.00	Φ90.00	2.4
6113	Φ20.60	Φ33.40	1.3	6150	Φ67.90	Φ84.20	1.3
6114	Φ22.00	Φ35.00	1.3	6151	Φ71.20	Φ87.40	1.3
6115	Φ22.00	Φ40.00	1.4	6152	Φ73.00	Φ97.00	2.5
6116	Φ23.00	Φ38.00	1.4	6153	Φ79.10	Φ95.50	1.3
6117	Φ23.00	Φ41.30	1.8	6154	Φ81.00	Φ97.00	1.3
6118	Φ23.60	Φ36.50	1.35	6155	Φ85.40	Φ101.80	1.3
6119	Φ26.00	Φ40.00	1.3	6156	Φ88.66	Φ105.00	1.3
6120	Φ26.00	Φ50.00	2	6157	Φ90.00	Φ120.00	2.4
6121	Φ26.00	Φ46.00	1.8	6158	Φ90.40	Φ132.10	3.4
6122	Φ27.00	Φ39.70	1.3	6159	Φ94.90	Φ111.32	1.3
6123	Φ28.00	Φ38.00	1	6160	Φ98.00	Φ114.50	1.3
6124	Φ29.60	Φ42.50	1	6161	Φ98.00	Φ118.00	1.6
6125	Φ30.00	Φ50.00	1.85	6162	Φ102.00	Φ132.00	2.7
6126	Φ30.20	Φ40.20	1.1	6163	Φ104.60	Φ121.00	1.3
6127	Φ31.40	Φ44.30	1.3	6164	Φ107.36	Φ124.00	1.3
6128	Φ33.50	Φ45.50	1.1	6165	Φ114.70	Φ132.20	1.3
6129	Φ35.00	Φ61.00	2.5	6166	Φ115.00	Φ145.00	2.9
6130	Φ36.20	Φ49.60	1.3	6167	Φ119.80	Φ137.10	1.3
6131	Φ38.00	Φ55.00	1.4	6168	Φ124.48	Φ141.90	1.3
6132	Φ39.00	Φ59.00	1.8	6169	Φ125.00	Φ145.00	1.6
6133	Φ39.30	Φ52.70	1.3	6170	Φ127.00	Φ157.00	2.9
6134	Φ42.40	Φ55.60	1.3	6171	Φ149.00	Φ169.00	1.6
6135	Φ44.60	Φ64.60	1.5	6172	Φ150.00	Φ185.00	2.9
6136	Φ45.90	Φ59.30	1.3	6173	Φ200.00	Φ235.00	3.4
6137	Φ46.00	Φ62.50	1.4	6174	Φ210.00	Φ245.00	3.4

※ When customers place an order ,please write the order number clearly,material is 316L,if other material is needed ,please indicate it .

Bellow



Metal Flexible Hoses

Brief Introduction

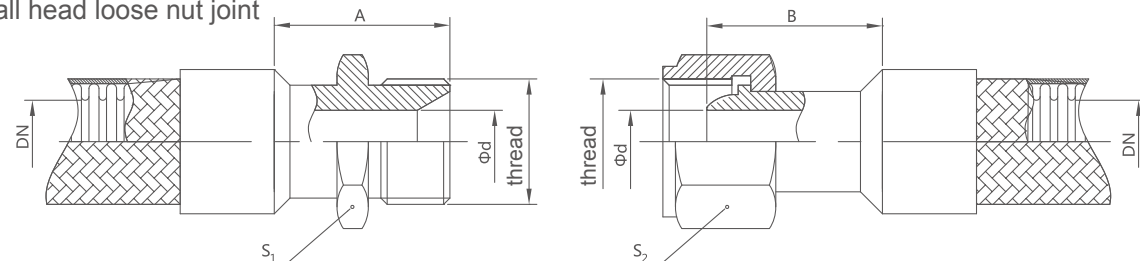
Liquid metal flexible hose is composed by corrugated pipe, net cover, joint or corrugated pipe and joint. Metal flexible hose is mainly used for line pipe, absorbing Piping thermal expansion and cold shrink or ground vibration and sinking and reciprocating displacement, etc

Type

- Threaded connections
Joint type: ball head loose nut, conical surface loose nut, inner/outer thread, Any oil and surface seal etc.
- Flange connections
Flange type: fixed/loose flange, welding flange, double insulation bellows and vacuum flange (see flange fittings), etc.
- Cutting sleeve joint
Joint type: quick connector and welding tube, etc
All above, the materials of bellows, net cover and joint are 304 stainless steel, also we can choose the materials according to the requirements of customers.

Specifications and dimensions

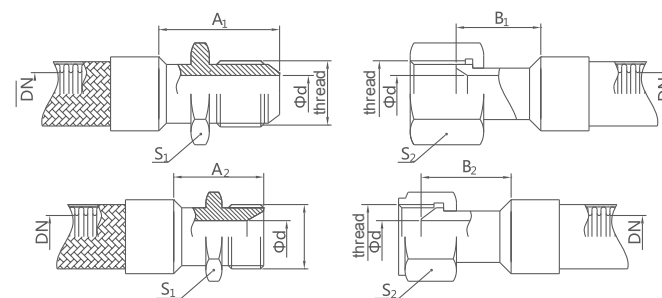
Ball head loose nut joint



DN	thread (in)	d	A	S1	B	S2	DN	thread (in)	d	A	S1	B	S2
7	1/4	8	27	17	21	19	20	3/4	20	36	32	24	36
10	3/4	10	28	21	21	24	25	1	25	42	38	24	41
12	1/2	12	28	21	21	24	40	1 1/4	40	49	54	34	55
16	1/2	15	33	26	24	27	50	2	50	52	63	35	67

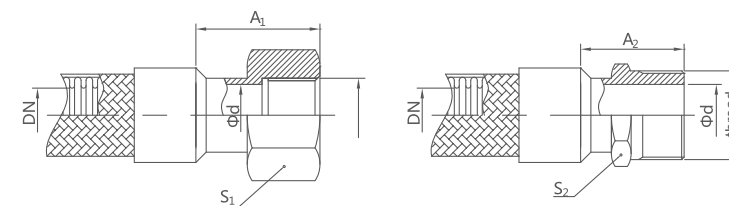
Bellow

Conical surface loose nut joint



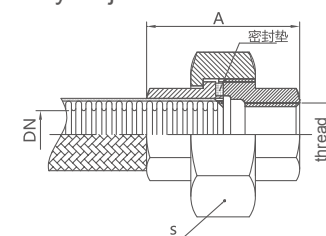
DN	thread (in)	d	A1	B1	A2	B2	S1	S2
7	1/4	8	27	15	27	15	17	19
10	3/4	10	28	17	28	17	21	24
12	1/2	12	28	17	28	17	21	24
16	1/2	15	33	20	33	20	26	27
20	3/4	20	36	20	36	20	32	36
25	1	25	42	22	42	22	38	41
40	1 1/4	40	49	36	49	36	54	55
50	2	50	52	36	52	36	63	67

Inner/outer thread joint



DN	thread (in)	d	A1	S1	A2	S2
7	1/4	8	24	18	27	17
10	3/4	10	26	22	28	21
12	1/2	12	26	22	28	21
16	1/2	15	34	26	33	26
20	3/4	20	35	32	36	32
25	1	25	43	39	42	38
40	1 1/4	40	49	54	49	54
50	2	50	53	66	52	63

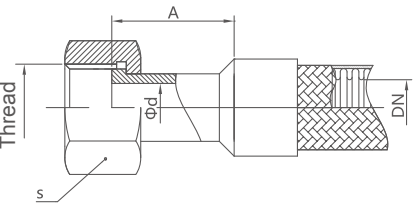
Any oil joint



DN	thread (in)	S	A	DN	thread (in)	S	A
7	1/4	32	35	20	3/4	49	50
10	3/4	38	38	25	1	59	55
12	1/2	38	38	40	1 1/4	78	68
16	1/2	43	42	50	2	93	74

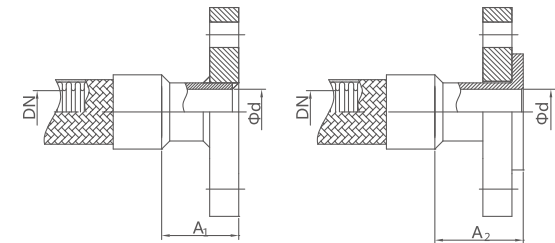
———— Bellow ————

Surface seal joint



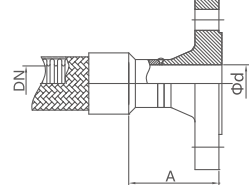
DN	d	Thread(in)	S	A
7	8	1/4	17	20
10	10	3/4	22	20
12	12	1/2	22	20
16	15	1/2	24	25

Fixed/loose flange



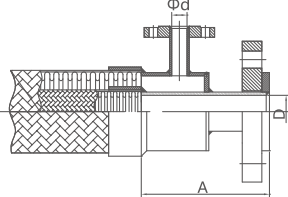
DN	d	A1	A2
10	10	30	30
12	12	30	30
16	15	30	30
20	20	30	30

Welding flange



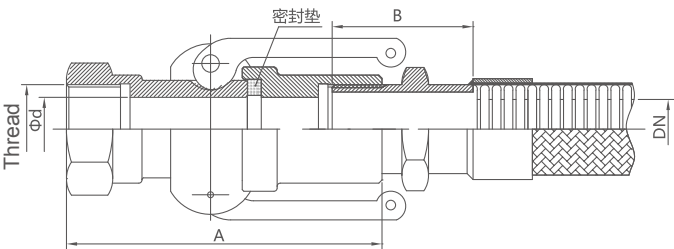
DN	d	A	DN	d	A
10	10	30	25	25	50
12	12	30	40	40	50
16	15	30	50	50	50
20	20	30			

Double insulation bellows



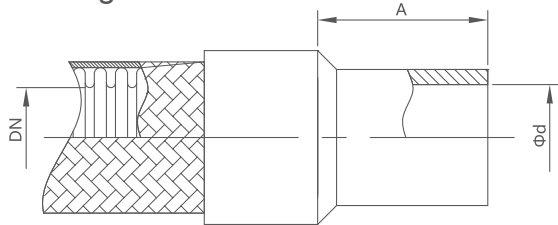
D	d	A	D	d	A
20	8	24	40	25	43
25	10	26	50	40	49
25	15	34	65	50	53

Quick connector



DN	Thread(in)	d	A	B
16	1/2	15	57	27
20	3/4	20	59	29
25	1	25	80	37
40	1 1/4	40	92	43
50	2	50	96	47

Welding tube



DN	d	A	DN	d	A
7	8	30	50	50	50
10	10	30	65	65	50
12	12	30	80	80	50
16	15	30	100	100	50
20	20	30	125	125	50
25	25	50	150	150	60
40	40	50			

product introduction

In order to meet the special application requirements of customers, we can design and customize other vacuum components needed for the vacuum chamber to form a complete vacuum system.

The usual components for a vacuum chamber include:

The supporting frame - is made of carbon steel or extruded aluminum. A variety of closed cabinets and open compartments of different structures are available.

Pump combination -- any high vacuum pump (turbo molecular pump, cryogenic pump, sputtering ion pump or oil diffusion pump), can be equipped with corresponding pre-stage pump (roots pump unit, oil-free roots pump unit, rotary vane pump, screw pump)

Valve and vacuum unit combination -- manual control and pneumatic or electric automatic computer control are optional.

Vacuum lock combination -- the combination of sample pre-vacuum chamber and working room, including vacuum lock, sample transfer device, pump combination and valve combination, etc.

In addition, we also for some small laboratories and universities such as research and development provide standard economic vacuum electronic system, all kinds of target parts include: stainless steel or aluminum alloy structure of metal chamber, chamber base, links to various through seal ring cavity chamber, machine cabinet support framework (can be equipped with bell chamber lifting power unit), and form a complete set of vacuum pump.



product introduction

Vacuum chamber inside size range: 2500-4000mm

Door drive mechanism: electric

Door lock mechanism: pneumatic

To undertake the development and design of various types of vacuum chamber, customized according to the drawing, etc. Design and manufacture of various vacuum Chambers and vacuum units for high vacuum and ultra-high vacuum applications

Products strictly comply with relevant standards, and carry out raw material inspection, processing online inspection, semi-finished product inspection and finished product delivery inspection, joint inspection and acceptance of non-standard customized products with customers; It needs to be specially pointed out that for vacuum chamber, all joints, welds and flange joints can pass strict X-ray inspection and leak detection test of helium mass spectrometer, and the leakage rate of the whole system is tested, which is better than 8.0×10^{-8} pa L/S



Applications: environmental simulation, vacuum coating, vacuum furnace, vacuum heat treatment, vacuum freeze sublimation drying, vacuum distillation, etc.

航天产品

